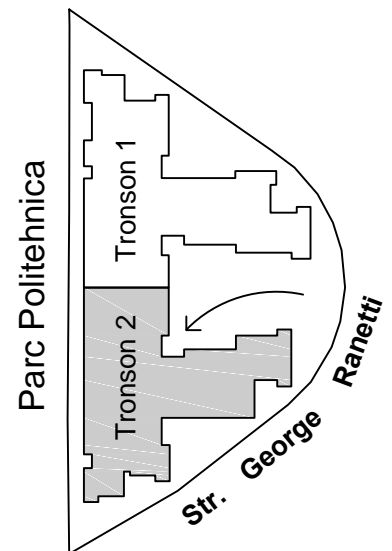
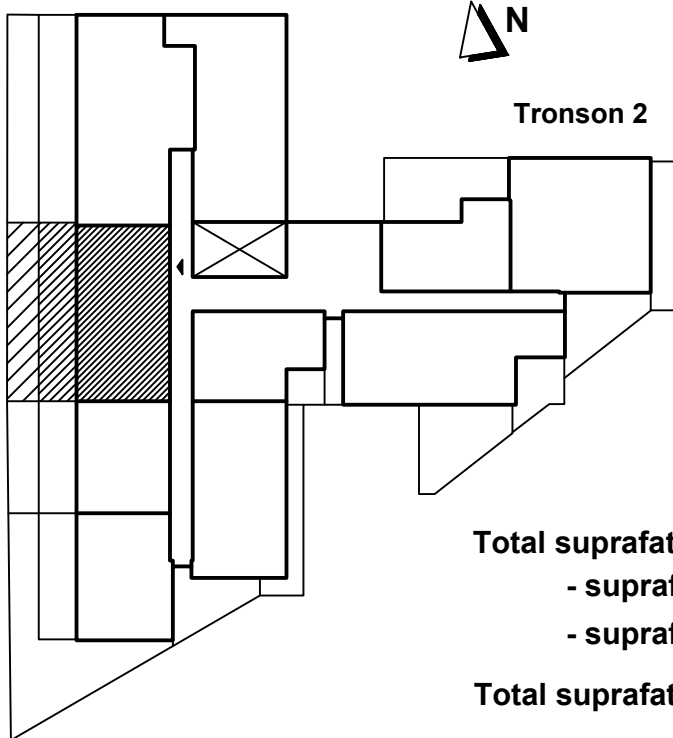


Apartment 3 camere - 2005, parter, tronson 2

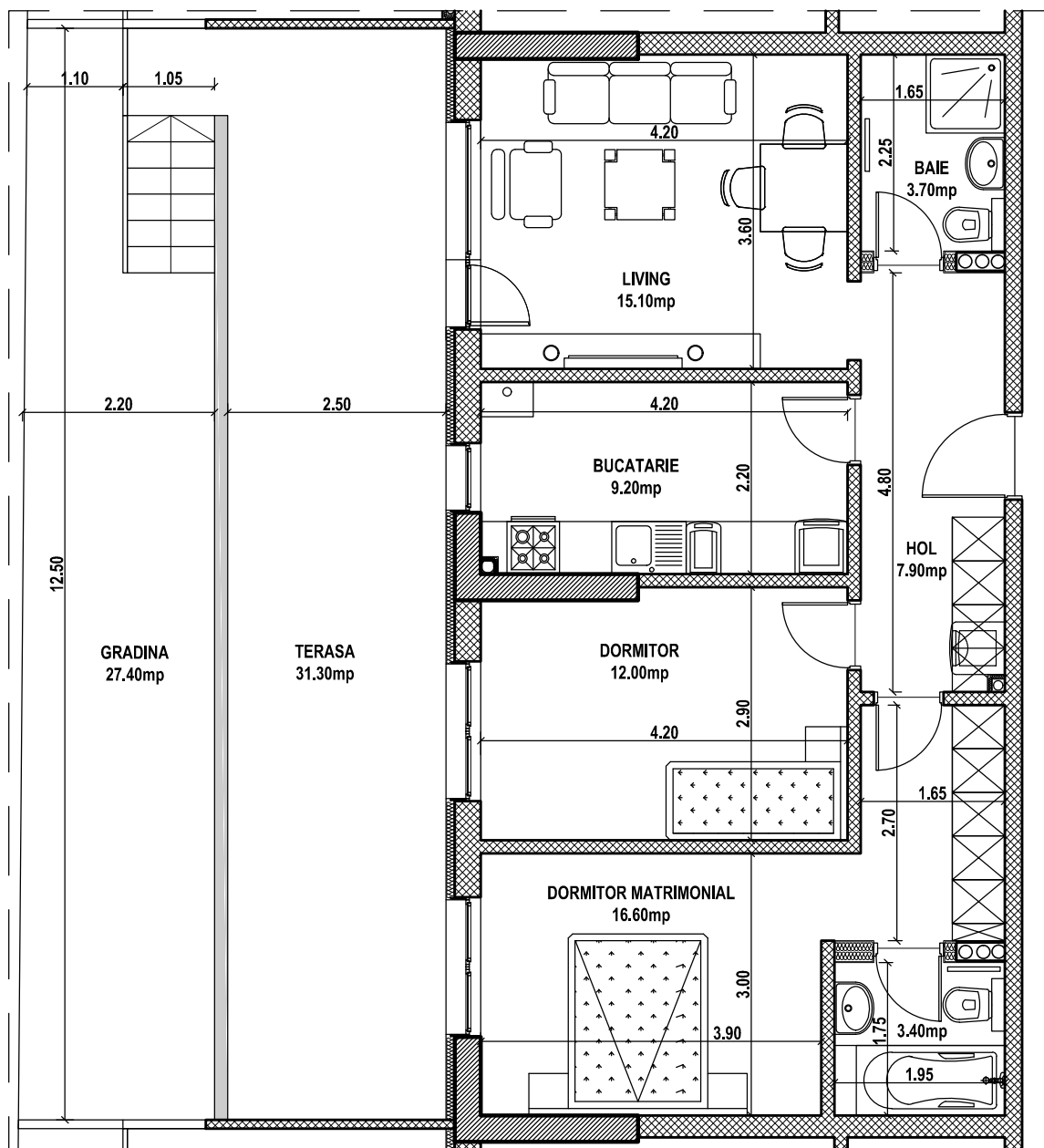
Str. George Ranetti, Nr. 2-8, Sector 6



Total suprafata construita apartament = 145.40 mp, din care:

- suprafata construita terasa = 33.40 mp
- suprafata construita gradina = 30.20 mp

Total suprafata utila apartament = 99.20 mp



← AP. 2005